

XL

2024



Renegade
XL



THE XL IS READY FOR TOMORROW'S NEXT GREAT ADVENTURE. WITH PORCELAIN TILED FLOORS, BEAUTIFUL QUARTZ COUNTERTOPS AND HARDWOOD MAPLE CABINETS, THE XL GIVES YOU THE ABILITY TO TRAVEL IN STYLE WHILE ALLOWING YOU TO HAVE ALL THE COMFORTS OF HOME. EXPERIENCE AN UNPARALLELED LEVEL OF CRAFTSMANSHIP, ALONG WITH INTEGRATED TECHNOLOGY THAT PREPARES YOU FOR THE JOURNEY AHEAD.



CABINET OPTIONS



BURNISHED SABLE ROCKPORT LAKEWOOD CAPE COD

FLOORING OPTIONS



NATURAL GREY

BERNINI CAMO

DURBAN WHITE



Featured here is the X45BBC in our Retreat decor with beautiful Rockport cabinetry.



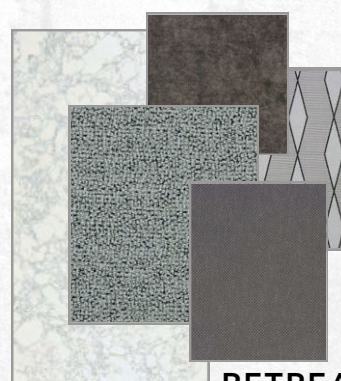
INTERIOR DECORS



OASIS



HAVEN



RETREAT



LEATHER
COLOR
OPTIONS



AT A GLANCE



EXTERIOR HEIGHT	13' 6"
EXTERIOR WIDTH	99 1/4"
EXTERIOR LENGTH	43' 6" - 44'11"
INTERIOR HEIGHT	90"
INTERIOR WIDTH	95 1/2"
FUEL CAPACITY	120 GALLONS
DEF CAPACITY	13 GALLONS
FRESH WATER CAPACITY	150 GALLONS
GREY WATER CAPACITY	75 GALLONS
BLACK WATER CAPACITY	75 GALLONS

KEY FEATURES

- 600D AQUAHOT® HYDRONIC HEATING SYSTEM
- MULTIPLEX SYSTEM WITH COLOR TOUCH PANEL & WIFI APP CONTROL
- ALL ELECTRIC COACH W/TWO 3,000W INVERTERS
- 7 PAINT COLOR OPTIONS
- FOUR-POINT AUTOMATIC HYDRAULIC LEVELING SYSTEM
- DUAL ELECTRIC LATERAL ARM AWNINGS WITH INTEGRATED LED LIGHTS & MATCHING ROADSIDE PROFILES
- SOLID HARDWOOD CABINETS AND CAMBRIA® QUARTZ COUNTERTOPS





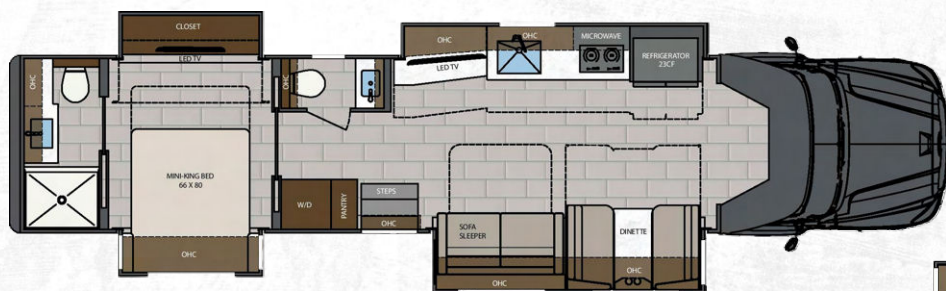
FLOORPLANS



X45DBM | 45' MID ENTRY, QUAD SLIDE



X45BBC | 45' FRONT ENTRY, BUNK BEDS, 3 SLIDES



X43DB | 43' MID ENTRY, QUAD SLIDE



X45QS | 45' MID BATH, REAR CLOSET, QUAD SLIDE

PAINT OPTIONS



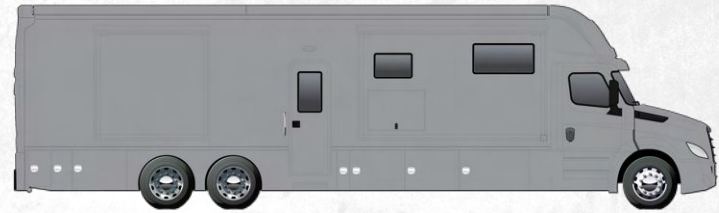
ZENITH



MERIDIAN



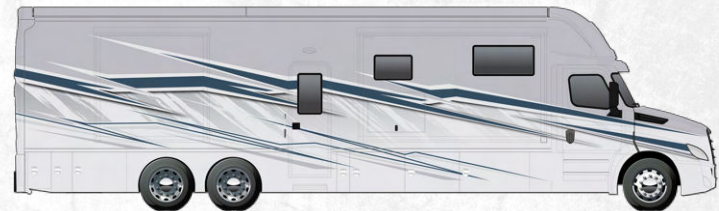
ECLIPSE



POLARIS



TUNDRA



SOLSTICE



NEBULA



STANDARDS AND OPTIONS

CAB/CHASSIS

- FREIGHTLINER® CASCADIA 126 TANDEM AXLE
- DETROIT® DD16 ENGINE WITH 600HP, 1,850 FT. LB. TORQUE
- ALLISON® TRV4000 ELECTRONIC 6-SPEED TRANSMISSION (52,000 LBS. GVWR) OR DETROIT® DT12 12-SPEED TRANSMISSION (58,000 LBS. GVWR)
- 30,000 LB. TOWING CAPACITY
- SINGLE 120-GALLON ALUMINUM FUEL TANK
- 13 GALLON DEF TANK
- POLISHED ALUMINUM WHEELS WITH CENTER CAPS
- AIRLINER® REAR AIR SUSPENSION
- DIGITAL DASH CLUSTER AND 10" INFOTAINMENT SYSTEM WITH AM-FM RADIO, BLUETOOTH®, APPLE® CARPLAY™ AND ANDROID® AUTO™ COMPATIBLE
- 360° CAMERA SYSTEM WITH BACK-UP AND SIDE VIEW FEATURES
- UPGRADED CAB SOUND SYSTEM
- PREMIUM FREIGHTLINER® SOUND AND THERMAL INSULATION PACKAGE
- LED HEADLIGHT WITH BUMPER INTEGRATED FOG LIGHTS
- POWER WINDOWS AND DOOR LOCKS
- POWER/HEATED REMOTE-CONTROL MIRRORS
- AIR RIDE DRIVER AND PASSENGER SEAT PEDESTALS WITH SWIVELS
- LEATHER DRIVER/PASSENGER SEATS WITH ARMRESTS
- AUXILIARY AIR CHUCK AND HOSE
- FREIGHTLINER® SAFETY ASSURANCE PACKAGE:
 - COLLISION MITIGATION
 - ADAPTIVE CRUISE CONTROL
 - LANE DEPARTURE WARNING
 - DETROIT® CONNECT SAFETY EVENT VIEWER PACKAGE

EXTERIOR

- AERODYNAMIC FIBERGLASS FRONT AND REAR CAPS AND TRANSITION
- FOUR-POINT HYDRAULIC LEVELING SYSTEM WITH APP
- LIGHTED EXTERIOR ENTRY DOOR ASSIST HANDLE
- KEYLESS ENTRY
- POWERED SLIDING DOUBLE ENTRY STEPS
- (7) COLORWAY PAINT OPTIONS
- DUAL, ROOF MOUNTED GIRARD® 2-STAGE LATERAL ARM AWNING WITH LED LIGHTS INTEGRATED INTO FRONT AND REAR FIBERGLASS CAPS
- SLIDE TOPPERS
- FRAMELESS DUAL-PANE TINTED WINDOWS WITH SCREENS
- POWER LOCKING, SIDE-SWING ALUMINUM COMPARTMENT DOORS WITH SINGLE HANDLE PADDLE LATCHES AND DOUBLE CATCH
- STEEL STORAGE COMPARTMENTS WITH HIGHLY DURABLE BEDLINER SURFACE
- DIAMOND SHIELD™ NANO FUSION PAINT PROTECTION FILM - FRONT MASK
- FULL-WIDTH ROCK GUARD MUDFLAP
- UNDERCOATING

CONSTRUCTION

- 2" VACUUM BOND LAMINATED SIDEWALLS WITH WELDED ALUMINUM FRAMING
- WELDED ALUMINUM ROOF TRUSS SYSTEM WITH FRAMED CUTOUTS
- ONE-PIECE CROWNED FIBERGLASS ROOF SURFACE
- "SUPER SANDWICH" FLOOR CONSTRUCTION WITH COMPOSITE UNDERBELLY INCLUDES:
 - 2" WELDED STEEL FLOOR JOIST SYSTEM MOUNTED TO 6" STEEL LONGITUDINAL FLOOR BEAMS
 - 3/4" FIR PLYWOOD DECK OVER 2 X 4 WOOD-FRAMED RESIDENTIAL FLOOR WITH THERMAL AND SOUND DEADENING INSULATION

INTERIOR

- (3) INTERIOR DECOR OPTIONS
- DÉCOR COORDINATING WOOD VALANCES WITH FABRIC ACCENTS
- DOUBLE ROLLER POWERED DAY/MANUAL NIGHT SHADES
- SOFT TOUCH PADDED WALLS AND CEILING
- 12"X24" PORCELAIN TILE FLOORING THROUGHOUT
- MAPLE HARDWOOD CABINETRY
- 4-WOOD STAIN COLOR OPTIONS, 2-FINISH OPTIONS
- DOVETAIL DRAWERS ON SOFT CLOSING SLIDES
- FRAMED DOORS ON HIDDEN HINGES
- PANTRY
- HARDWOOD SLIDE FASCIA WITH LIGHTING
- DECORATIVE CEILING TREATMENT WITH LIGHTING
- SATIN NICKEL DOOR HARDWARE
- SATIN NICKEL KITCHEN FAUCET
- CAMBRIA® QUARTZ COUNTERTOPS THROUGHOUT
- RECTANGULAR STAINLESS STEEL SINGLE BOWL UNDERMOUNT KITCHEN SINK WITH ACCESSORIES
- ACCENT LIGHTING AT COUNTERTOPS AND TOEKICK
- GROUTED TILE BACKSPLASH
- LED LIGHTING
- MEMORY FOAM MATTRESS
- MASTROTTO® ITALIAN HIDE LEATHER FURNITURE
- BOOTH DINETTE
- SOFA SLEEPER, HIDE-A-BED
- STORAGE LOVESEAT (45DBM AND 45QS ONLY)
- AEROCAP WITH STORAGE CABINET

APPLIANCES

- 23 CU. FT. SAMSUNG BESPOKE® REFRIGERATOR WITH FAMILY HUB AND ICEMAKER
- RECESSED 2-BURNER ELECTRIC INDUCTION COOKTOP WITH BUTCHER BLOCK COVERS
- 1.7 CU. FT. BLACK STAINLESS CONVECTION MICROWAVE OVEN
- AQUA-HOT® 600D HYDRONIC WATER AND ZONE HEATING SYSTEM WITH ENGINE PRE-HEAT
- (3) 15,000 BTU ROOF A/C WITH HEAT PUMPS AND PLUMBED CONDENSATION LINES
- DUCTED AIR CONDITIONING
- MAXXAIR® DELUXE POWER VENTS
- PRE-WIRED AND PLUMBED FOR OPTIONAL WASHER/DRYER
- CARBON MONOXIDE, LP AND SMOKE DETECTORS, AND FIRE EXTINGUISHER

ENTERTAINMENT SYSTEM

- 50" 4K SMART LED TV IN LIVING AREA
- BOSE® SOUNDBAR HOME THEATRE SYSTEM WITH BLUETOOTH STREAMING AND WIRELESS SUBWOOFER IN LIVING AREA
- 43" 4K SMART LED TV AND BOSE SOUNDBAR IN BEDROOM
- EXTERIOR ENTERTAINMENT CENTER
 - 43" SMART LED TV ON SWIVEL
 - SOUNDBAR WITH BLUETOOTH STREAMING
 - USB CHARGING
- WIFIRANGER® CONVERGE™ HD ROOFTOP OTA ANTENNA WITH WIFI BOOSTER AND 4G READY
- WINEGARD® IN-MOTION SATELLITE SYSTEM
- WINEGARD® TRAV'LER STATIONARY HD SATELLITE SYSTEM
- PREMIUM ROOFTOP CELL BOOSTER

BATH

- MAPLE HARDWOOD VANITY, MEDICINE AND LINEN STORAGE CABINETS
- LED LIGHTED VANITY MIRROR
- DELUXE SATIN NICKEL BATH FAUCET AND RAIN SHOWER ASSEMBLY WITH BODY SPRAYERS
- SATIN NICKEL TOWEL BAR, TOWEL RING, AND TP HOLDER
- PORCELAIN MACERATOR TOILET WITH PUSH BUTTON FLUSH
- CAMBRIA® QUARTZ COUNTERTOP WITH SOLID SURFACE INTEGRATED SINK
- SOLID SURFACE SHOWER WITH WALL TILE AND FLOOR INLAY, AND SLIDING GLASS DOOR

ELECTRICAL SYSTEMS

- 12.5KW ONAN® QUIET DIESEL GENERATOR
- AUTOMATIC GENERATOR START SYSTEM
- 50-AMP ELECTRICAL PANEL
- DUAL 3,000W TRUE SINE WAVE INVERTERS
- TRANSFER SWITCH WITH SURGE PROTECTION
- (2) 330AH AGM HOUSE BATTERY
- SOLAR CHARGING SYSTEM PRE-WIRE
- MULTIPLEX CONTROL SYSTEM WITH WIFI APP CONTROL
- USB/USB-C CHARGING IN LIVING AREA, BEDROOM, KITCHEN AND BUNK AREAS
- 50-AMP POWER RETRACTABLE SHORE CORD REEL
- 12V HOLDING TANK HEATERS, GREY AND BLACK TANKS

PLUMBING

- 150 GALLON FRESH WATER TANK
- 75 GALLON GREY TANK
- 75 GALLON BLACK TANK
- SEE-LEVEL® TANK MONITORING SYSTEM
- FULL MAINTENANCE WET BAY
 - BLACK TANK FLUSH SYSTEM
 - CITY WATER HOOKUP WITH POWERED RETRACTABLE HOSE REEL
 - OUTSIDE FAUCET WITH SPRAYER
- ON DEMAND WATER PUMP
- WHOLE HOUSE WATER FILTRATION SYSTEM

POPULAR OPTIONS

- RECLINING THEATRE SEAT ILO STANDARD SOFA
- HIGH GLOSS CABINET FINISH
- FLOOR HEAT THROUGHOUT
- 600W SOLAR PANEL SYSTEM (3 @ 200W)
- (2) 270AH HIGH-CAPACITY LITHIUM BATTERIES ILO AGM BATTERIES
- ADDITIONAL 270AH HIGH-CAPACITY LITHIUM BATTERY (LIMIT 2)
- FREIGHTLINER® BLACKOUT PACKAGE - GRILLE, BEZEL, MIRRORS AND WHEELS
- WASHER AND DRYER STACK
- CENTRAL VACUUM SYSTEM
- PREMIUM EXTERIOR REFER/FREEZER ON SLIDE TRAY
- HOLDING TANK SEWAGE MACERATOR SYSTEM
- UNDERBODY RGB ACCENT LIGHTING

*ALL FEATURES ARE SUBJECT TO CHANGE WITHOUT NOTICE OR OBLIGATION

RENEGADE WARRANTY

RENEGADE MY2024 MOTORHOMES ARE COVERED BY A 1-YEAR UNLIMITED MILES LIMITED WARRANTY, PLUS A 3-YEAR 36,000-MILE LIMITED STRUCTURAL WARRANTY.

ALL RENEGADE MOTORHOME CHASSIS, ENGINES, TRANSMISSIONS, AND DRIVETRAIN WARRANTIES ARE PROVIDED AND ADMINISTERED BY THEIR RESPECTIVE MANUFACTURERS.

FOR SPECIFIC INFORMATION ABOUT THESE WARRANTIES, ASK YOUR DEALER OR CONTACT RENEGADE RV.



Renegade
RV

52216 SR15 BRISTOL, IN 46507
574.848.1126 | RENEGADERV.COM