

# VERONA

2024



*Renegade*  
RV

# VERONA

THE VERONA COMBINES TRAVEL FRIENDLY PERFORMANCE AND LUXURY INTO EVERY DETAIL. BEAUTIFUL HARDWOOD CABINETS, POLISHED SOLID SURFACE COUNTERTOPS, STAINLESS STEEL APPLIANCES, AND ULTRA SOFT FURNITURE ARE JUST A FEW OF THE FEATURES THROUGHOUT THE VERONA. WITH AMPLE INTERIOR AND EXTERIOR STORAGE, AS WELL AS COMFORTABLE INTERIORS, THE VERONA MAKES TRAVELING THE ROAD A BREEZE.



## CABINETS



LAKWOOD



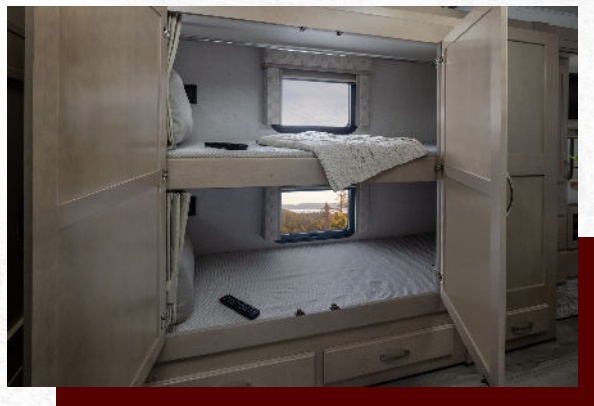
CAPE COD



Featured here is the Verona 40VRB in our Tuscany decor with Cape Cod cabinetry.



## INTERIOR DECORS



# AT A GLANCE



EXTERIOR HEIGHT	12'10"
EXTERIOR WIDTH	99 1/4"
EXTERIOR LENGTH	36'11" - 40' 2"
INTERIOR HEIGHT	84"
INTERIOR WIDTH	95 1/2"

FUEL CAPACITY	100 GALLONS
DEF CAPACITY	6 GALLONS
FRESH WATER CAPACITY	150 GALLONS
GREY WATER CAPACITY	75 GALLONS
BLACK WATER CAPACITY	75 GALLONS

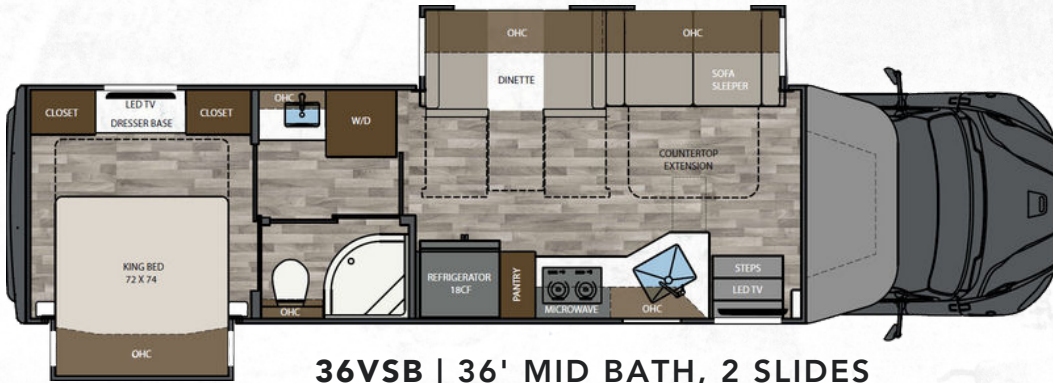
## KEY FEATURES

- 360HP W/ALLISON® 3200TRV TRANSMISSION
- 250D AQUAHOT® HYDRONIC HEATING
- MULTIPLEX SYSTEM WITH COLOR TOUCH PANEL & BLUETOOTH APP CONTROL
- ALL ELECTRIC COACH W/SINGLE 3,000W PURE SINE WAVE INVERTER
- 6 PAINT COLOR OPTIONS
- FOUR-POINT AUTOMATIC HYDRAULIC LEVELING SYSTEM
- ELECTRIC LATERAL ARM AWNING WITH INTEGRATED LED LIGHTS
- SOLID HARDWOOD CABINETS AND SOLID SURFACE COUNTERTOPS

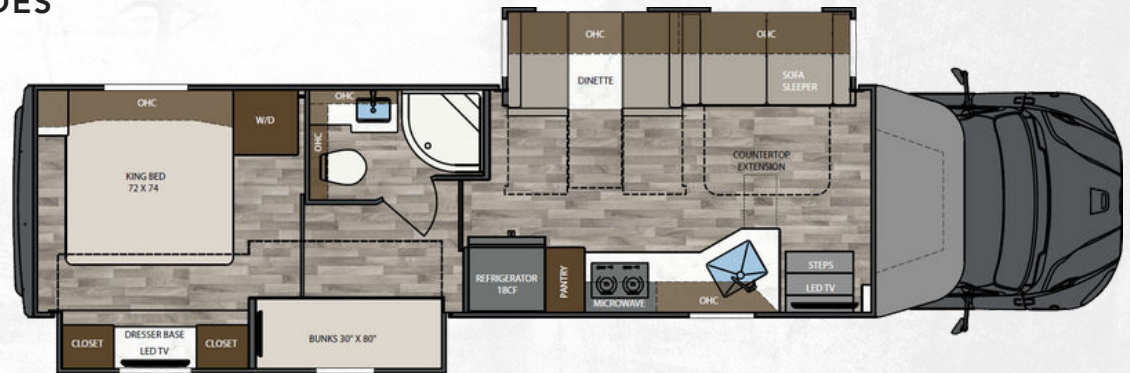


# VERONA

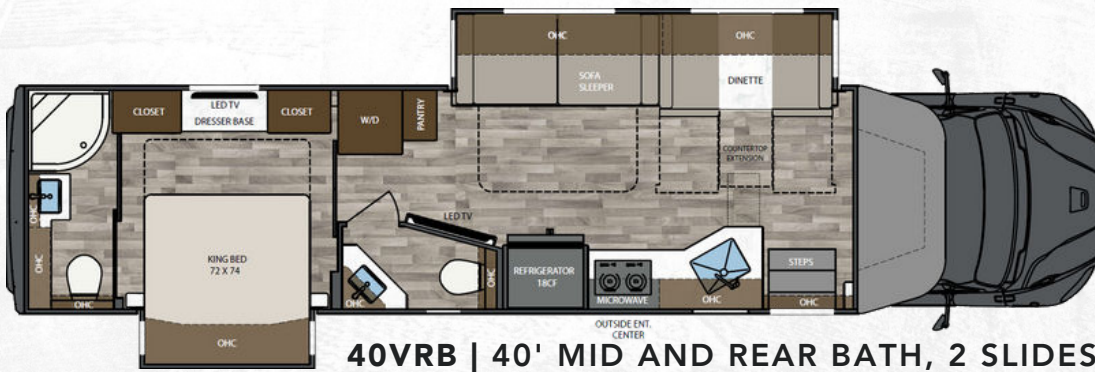
## FLOORPLANS



**36VSB | 36' MID BATH, 2 SLIDES**

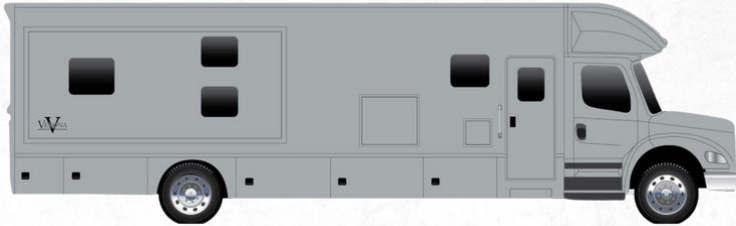


**40VBH | 40' MID BATH, BUNK BEDS, 2 SLIDES**

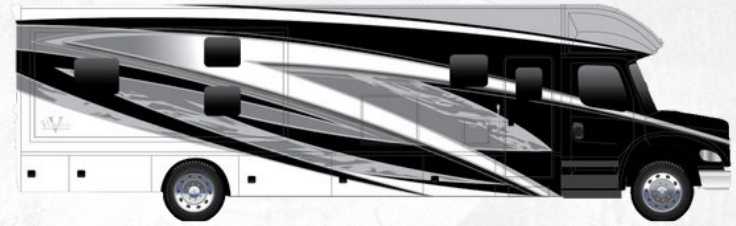


**40VRB | 40' MID AND REAR BATH, 2 SLIDES**

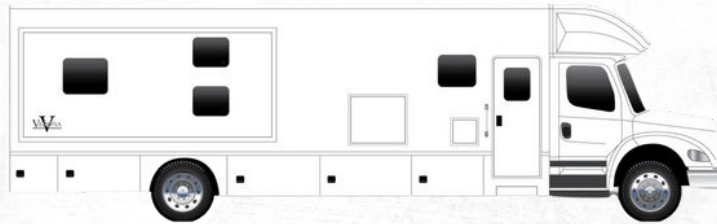
# PAINT OPTIONS



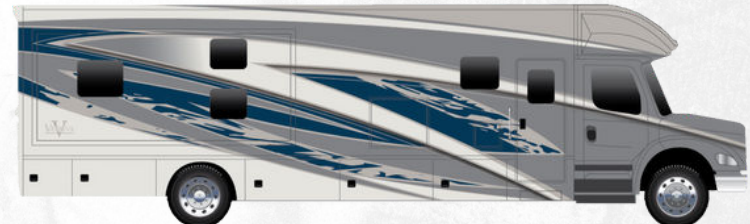
**POLARIS**



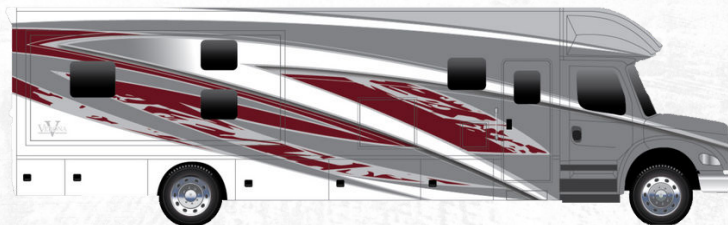
**KINETIC**



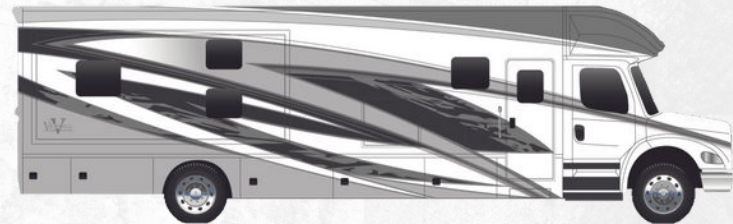
**TUNDRA**



**SURGE**



**FLARE**



**PROPULSION**

### CAB/CHASSIS

- FREIGHTLINER® M2-106
- CUMMINS® L9 ENGINE WITH 360HP, 1,150 LB. FT. TORQUE
- 34,300 LBS. GVWR
- ALLISON® 3200TRV ELECTRONIC 6-SPEED TRANSMISSION
- 20,000 LB. TOWING CAPACITY
- DUAL 50-GALLON ALUMINUM FUEL TANKS (100-GALLON TOTAL CAPACITY)
- 6 GALLON DEF TANK
- POLISHED ALUMINUM WHEELS WITH CENTER CAPS
- AIRLINER® REAR AIR SUSPENSION
- GARMIN® TOUCH SCREEN, BLUETOOTH, GPS, RV MAPS AND COLOR CAMERA MONITOR
- REAR AND SIDE VIEW CAMERAS
- PREMIUM FREIGHTLINER® SOUND AND THERMAL INSULATION PACKAGE
- LED HEADLIGHT ASSEMBLIES
- CRUISE CONTROL
- POWER WINDOWS AND DOOR LOCKS
- POWER/HEATED REMOTE CONTROL MIRRORS
- AIR RIDE DRIVER AND PASSENGER SEAT PEDESTALS WITH SWIVELS
- SOFT TOUCH DRIVER/PASSENGER SEATS WITH ARMRESTS
- AUXILIARY AIR CHUCK AND HOSE
- FREIGHTLINER® SAFETY ASSURANCE PACKAGE:
  - TAILGATE WARNING
  - LANE GUIDANCE
  - ELECTRONIC STABILITY CONTROL
  - COLLISION MITIGATION

### EXTERIOR

- AERODYNAMIC FIBERGLASS FRONT AND REAR CAPS, TRANSITION, AND CAB STEPS
- FOUR-POINT HYDRAULIC LEVELING SYSTEM WITH APP
- EXTERIOR ENTRY DOOR ASSIST HANDLE
- POWERED FOLDING DOUBLE ENTRY STEPS
- (6) COLORWAY PAINT OPTIONS
- GIRARD® GG LATERAL ARM ELECTRIC AWNING WITH LED LIGHTS
- SLIDE TOPPERS
- FRAMELESS DUAL-PANE TINTED WINDOWS WITH SCREENS
- SIDE-SWING ALUMINUM COMPARTMENT DOORS WITH SINGLE HANDLE PADDLE LATCHES AND DOUBLE CATCH
- STEEL STORAGE COMPARTMENTS WITH CARPETED LINING
- DIAMOND SHIELD® NANO-FUSION™ PAINT PROTECTION (FRONT MASK)
- UNDERCOATING

### CONSTRUCTION

- 2" VACUUM BOND LAMINATED SIDEWALLS WITH WELDED ALUMINUM FRAMING
- WELDED ALUMINUM ROOF TRUSS SYSTEM WITH FRAMED CUTOUTS
- ONE-PIECE CROWNED FIBERGLASS ROOF SURFACE
- "SUPER SANDWICH" FLOOR CONSTRUCTION WITH COMPOSITE UNDERBELLY INCLUDES:
  - 2" WELDED STEEL FLOOR JOIST SYSTEM MOUNTED TO 3" STEEL LONGITUDINAL FLOOR BEAMS
  - 3/4" FIR PLYWOOD DECK OVER 2 X 4 WOOD-FRAMED RESIDENTIAL FLOOR WITH THERMAL AND SOUND DEADENING INSULATION

### INTERIOR

- (3) INTERIOR DECOR OPTIONS
- DÉCOR COORDINATING FABRIC VALANCES
- DOUBLE ROLLER DAY/NIGHT SHADES (MANUAL)
- DECORATIVE WALLBOARD WITH COORDINATING ACCENT IN SLIDEOUTS
- HIGH-GRADE LVP FLOORING THROUGHOUT
- MAPLE HARDWOOD CABINETY
- 2-WOOD STAIN COLOR OPTIONS
- DRAWERS ON SOFT CLOSING SLIDES
- FRAMED DOORS ON HIDDEN HINGES
- PANTRY
- HARDWOOD SLIDE FASCIA
- SATIN NICKEL DOOR HARDWARE
- SATIN NICKEL KITCHEN FAUCET
- SOLID SURFACE COUNTERTOPS THROUGHOUT
- RECTANGULAR STAINLESS STEEL SINGLE BOWL UNDERMOUNT KITCHEN SINK WITH COVER
- GROUTED TILE BACKSPLASH
- SLIDING BUTCHER BLOCK COUNTERTOP EXTENSION
- LED LIGHTING
- MEMORY FOAM MATTRESS
- ULTRA SOFT TOUCH VINYL FURNITURE UPHOLSTERY
- CONVERTIBLE BOOTH DINETTE WITH STORAGE
- SOFA SLEEPER, TRI-FOLD
- AEROCAP WITH STORAGE CABINET

### APPLIANCES

- 18 CU. FT. FRENCH DOOR RESIDENTIAL STAINLESS STEEL REFRIGERATOR WITH ICEMAKER
- RECESSED 2-BURNER ELECTRIC INDUCTION COOKTOP WITH POLISHED SOLID SURFACE COVERS
- 1.7 CU. FT. STAINLESS STEEL CONVECTION MICROWAVE OVEN
- AQUA-HOT® 250D HYDRONIC WATER AND ZONE HEATING SYSTEM
- (2) 15,000 BTU ROOF A/C WITH HEAT PUMPS AND PLUMBED CONDENSATION LINES
- DUCTED AIR CONDITIONING
- MAXXAIR® POWER VENTS
- PRE-WIRED AND PLUMBED FOR OPTIONAL WASHER/DRYER
- CARBON MONOXIDE, LP AND SMOKE DETECTORS, AND FIRE EXTINGUISHER

### ENTERTAINMENT SYSTEM

- 43" 4K SMART LED TV IN LIVING AREA, MOUNTED ON ARTICULATING SWING ARM
- SOUNDBAR HOME THEATER WITH BLUETOOTH STREAMING AND WIRELESS SUBWOOFER IN LIVING AREA
- 32" 4K SMART LED TV IN THE BEDROOM
- EXTERIOR ENTERTAINMENT CENTER:
  - 32" SMART LED TV ON SWIVEL
  - SOUNDBAR WITH BLUETOOTH STREAMING
  - USB CHARGING
- WINEGARD® CONNECT 2.0 ROOFTOP OTA ANTENNA WITH WIFI AND 4G READY (SIM CARD REQ.)
- WINEGARD® IN-MOTION SATELLITE SYSTEM
- PREWIRE FOR WINEGARD® TRAV'LER STATIONARY HD SATELLITE SYSTEM

### BATH

- MAPLE HARDWOOD VANITY, MEDICINE AND LINEN STORAGE CABINETS
- LED VANITY LIGHT
- DELUXE SATIN NICKEL BATH FAUCET AND ADJUSTABLE SHOWER HEAD
- SATIN NICKEL TOWEL BAR, TOWEL RING, AND TP HOLDER
- PORCELAIN MACERATOR TOILET WITH PUSH BUTTON FLUSH
- SOLID SURFACE COUNTERTOP WITH INTEGRATED SINK
- WAVY PATTERNED FIBERGLASS SHOWER WITH GLASS DOOR
- SKYLIGHT OVER SHOWER

### ELECTRICAL SYSTEMS

- 8KW ONAN® QUIET DIESEL GENERATOR
- AUTOMATIC GENERATOR START SYSTEM
- 50-AMP ELECTRICAL PANEL
- 3,000W TRUE SINE WAVE INVERTER
- TRANSFER SWITCH WITH SURGE PROTECTION
- (1) 330AH AGM HOUSE BATTERY
- SOLAR CHARGING SYSTEM PRE-WIRE
- MULTIPLEX CONTROL SYSTEM WITH BLUETOOTH APP CONTROL
- USB/USB-C CHARGING IN LIVING AREA, BEDROOM, KITCHEN AND BUNK AREAS
- 50-AMP POWER RETRACTABLE SHORE CORD REEL
- 12V HOLDING TANK HEATERS, GREY AND BLACK TANKS

### PLUMBING

- 150 GALLON FRESH WATER TANK
- 75 GALLON GREY TANK
- 75 GALLON BLACK TANK
- SEE-LEVEL® TANK MONITORING SYSTEM
- FULL MAINTENANCE WET BAY
  - BLACK TANK FLUSH SYSTEM
  - CITY WATER HOOKUP WITH POWERED RETRACTABLE HOSE REEL
  - OUTSIDE FAUCET WITH SPRAYER
- ON DEMAND WATER PUMP
- WHOLE HOUSE WATER FILTRATION SYSTEM

### POPULAR OPTIONS

- RECLINING THEATRE SEAT ILO STANDARD SOFA
- (2) 19" MONITORS WITH DVD IN BUNK SLIDE (40VBH ONLY)
- CABOVER BUNK WITH WINDOW, POWER SHADE, AND 24" SMART LED TV
- WINEGARD® HD SATELLITE TRAVELR PRO
- 600W SOLAR PANEL SYSTEM (3 @ 200W)
- (3) 100AH LITHIUM BATTERIES ILO AGM BATTERIES
- AMERICAN RACING WHEELS® UPGRADE (BLACK)
- CALIBER 9® GRILLE PACKAGE (AVAIL. IN CHROME OR BLACK)
- FULL-WIDTH ROCK GUARD MUDFLAP
- WASHER AND DRYER STACK

# RENEGADE WARRANTY

**RENEGADE MY2024 MOTORHOMES ARE COVERED BY A 1-YEAR UNLIMITED MILES LIMITED WARRANTY, PLUS A 3-YEAR 36,000-MILE LIMITED STRUCTURAL WARRANTY.**

**ALL RENEGADE MOTORHOME CHASSIS, ENGINES, TRANSMISSIONS, AND DRIVETRAIN WARRANTIES ARE PROVIDED AND ADMINISTERED BY THEIR RESPECTIVE MANUFACTURERS.**

**FOR SPECIFIC INFORMATION ABOUT THESE WARRANTIES, ASK YOUR DEALER OR CONTACT RENEGADE RV.**



**Renegade**  
RV

52216 SR15 BRISTOL, IN 46507

574.848.1126 | RENEGADERV.COM